

FHWA LTAP/TTAP
CLEARINGHOUSE
PROGRAM ANALYSIS
REPORT
SUMMARY DATA

2010 NATIONAL LTAP/TTAP CONFERENCE
Oklahoma City, OK – July 14, 2010

What Does the Data Say About the Typical LTAP/TTAP Center Training?

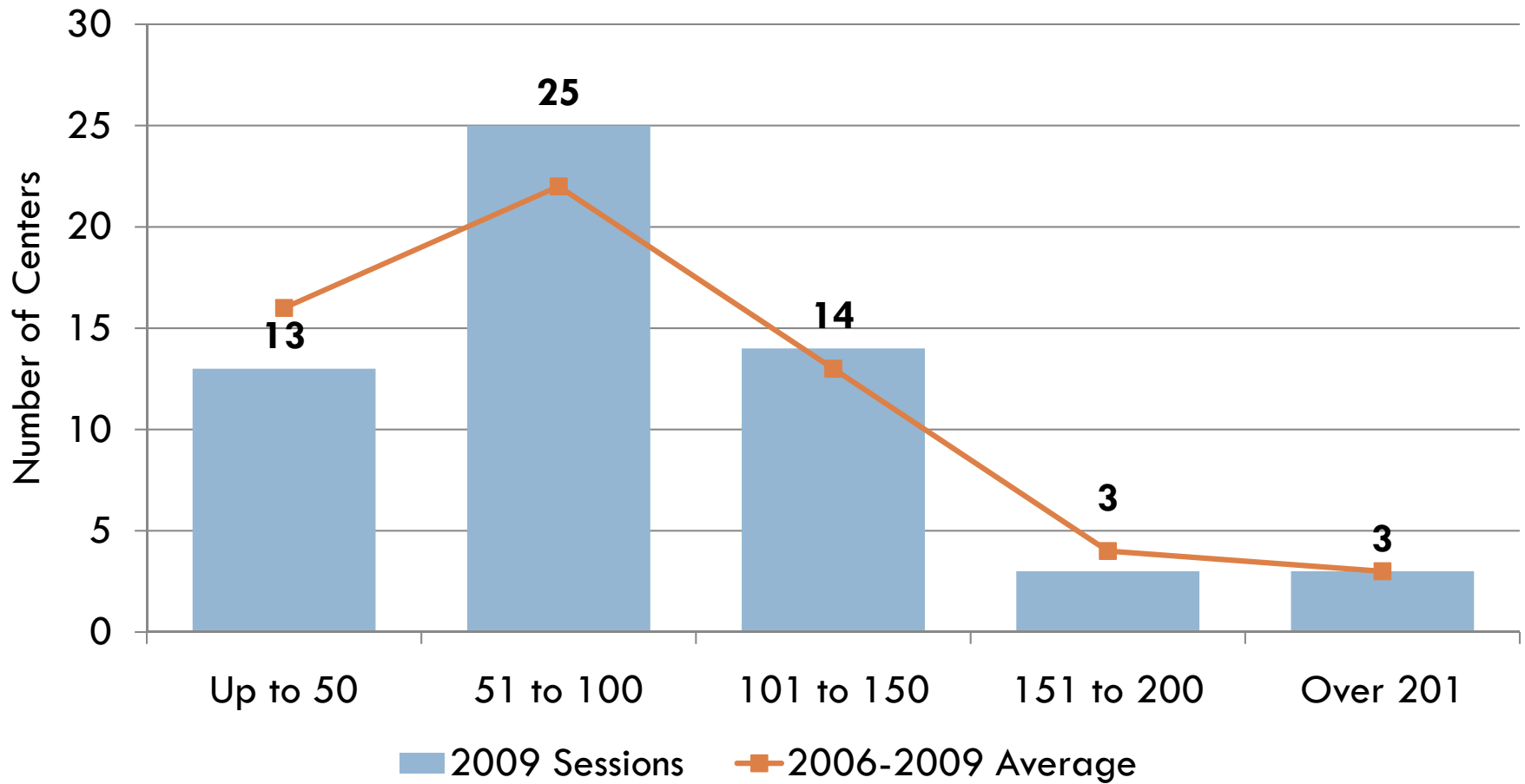
- Conduct 50 to 100 sessions per year
- Train between 1,000 and 2,000 workers per year
- Train mostly local clients
- Technical assistance comprises 29.2 percent of total time

What Does the Data Say About the Typical LTAP/TTAP Center Operations?

- Employ 3 full time equivalents
- Has a budget that is over \$280,000
- Distributes nearly 8,500 materials each year
- Provides a newsletter to over 6,200 clients
- Has thousands of interactions with partners

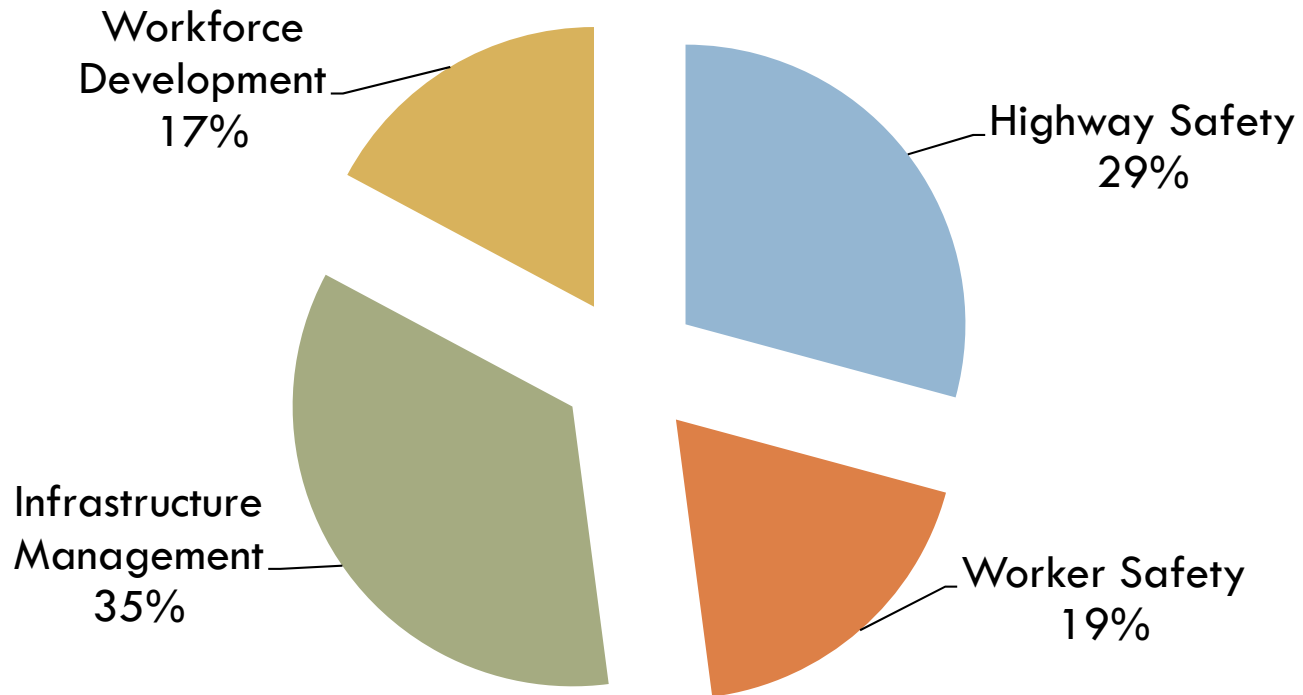
Most Centers Conduct 50 to 100 Sessions

Sessions Per Center



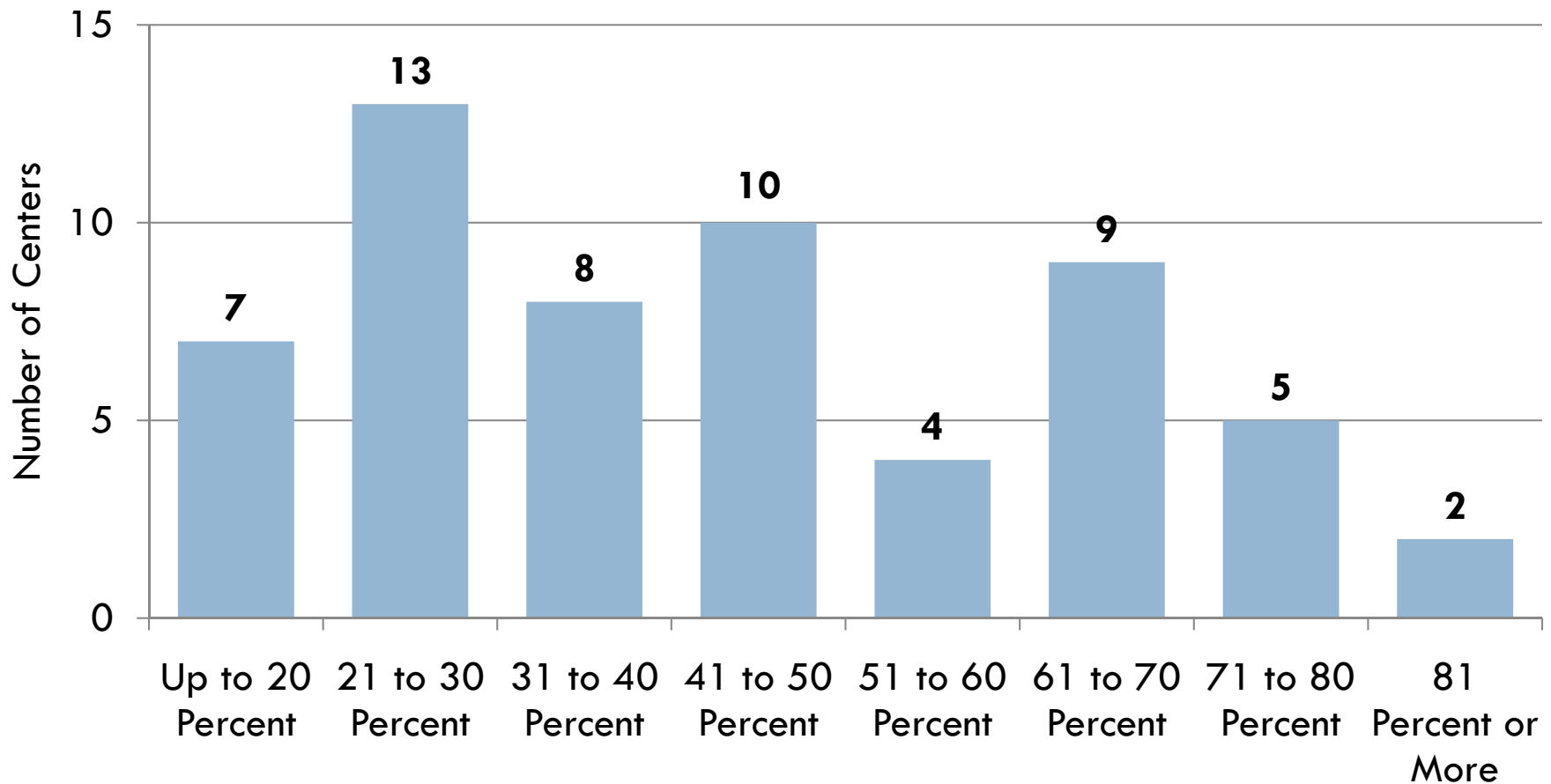
Safety Represents 48% of All Training ...

Types of Training - 2009



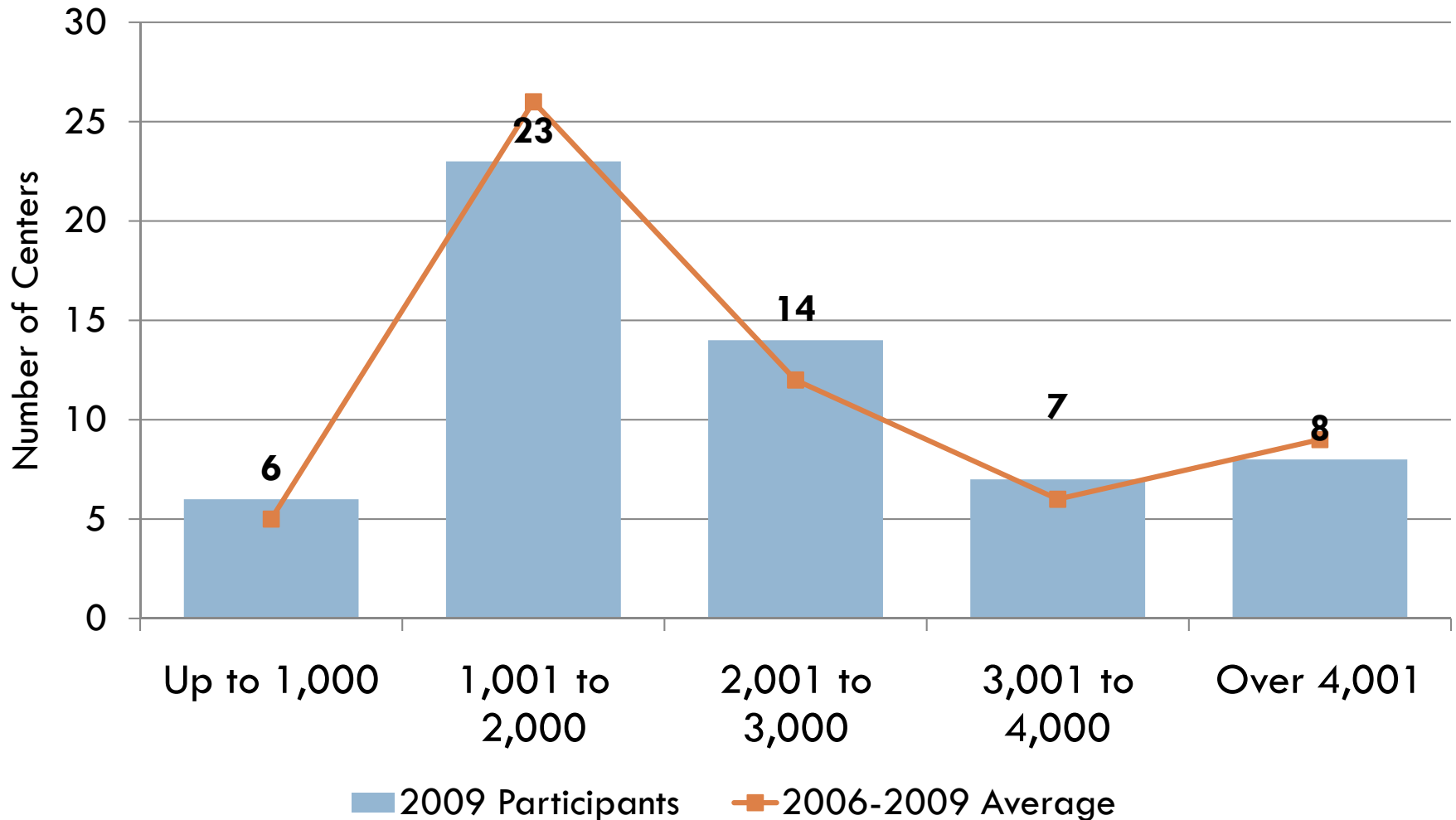
Center Safety Focus Varies

Percent of Total Sessions That Are Safety Related



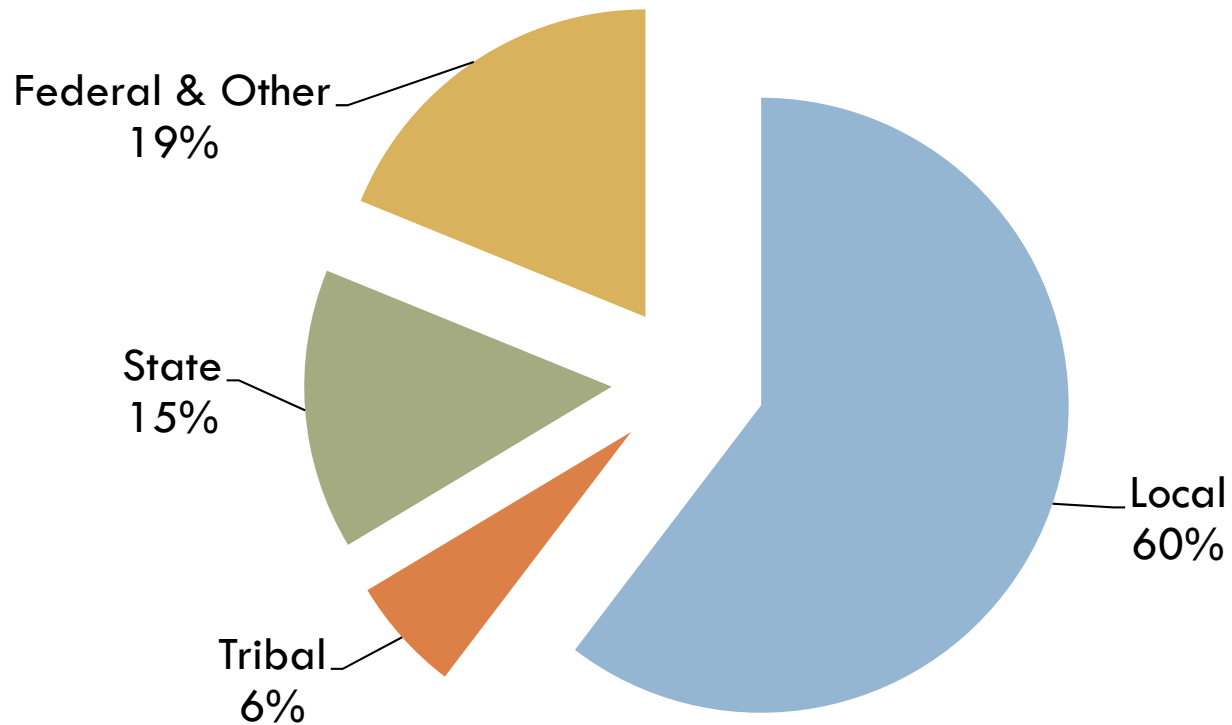
Most Centers Train 1,000 to 2,000 People

Number of Participants



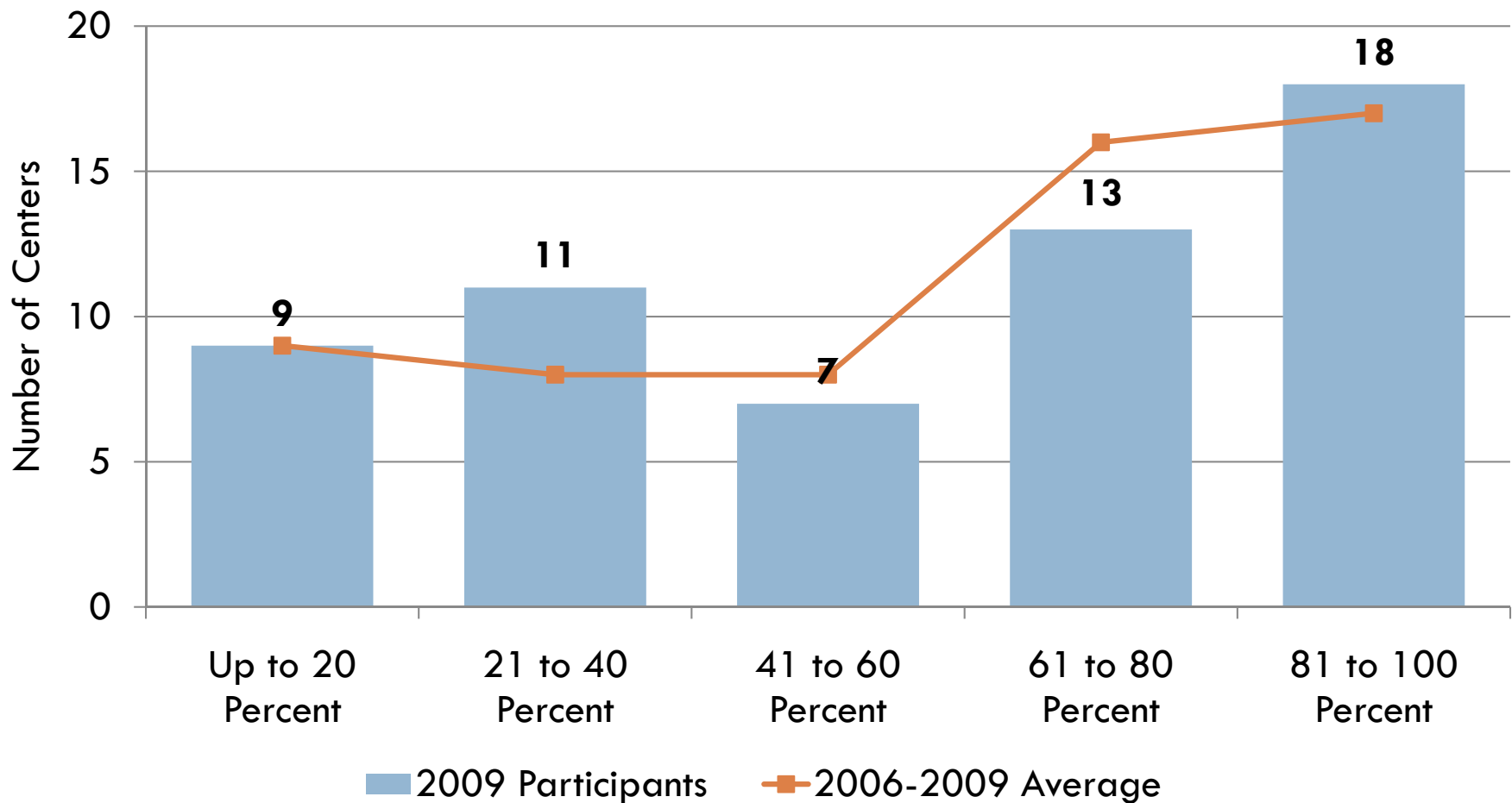
On Average, Most Training Is For Locals

2009 Breakdown of Participants



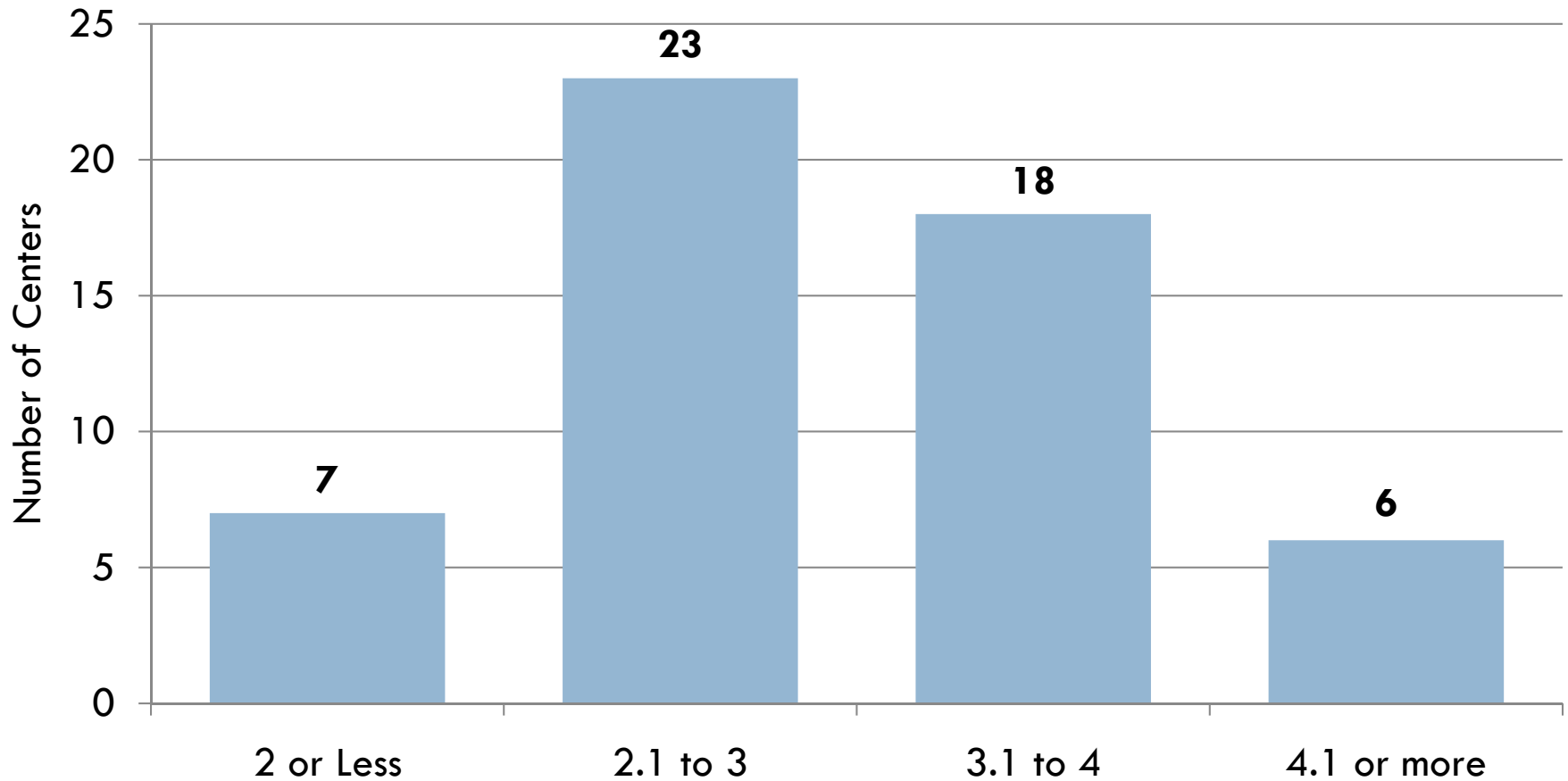
Center Local Participation Rate Varies

Percent of Total Participants That Are Locals



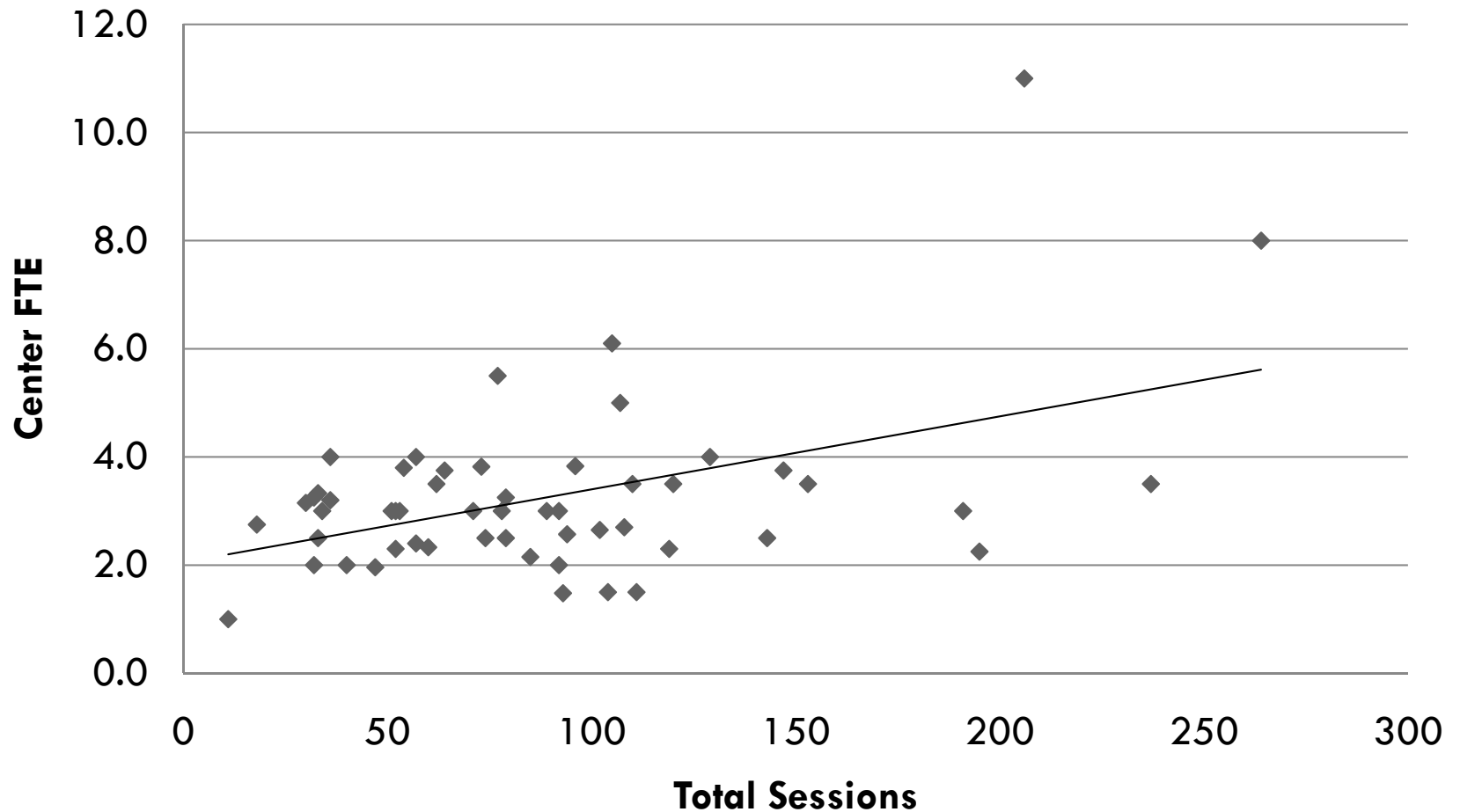
Most Centers Have 2 to 4 FTEs

FTEs Per Center



In General, More FTEs Is Associated With More Sessions ...

Center Sessions and FTE in 2009



What the Data Tells Us ...

There is a statistical relationship between FTEs and sessions ...

Taking to account the year and other Center fixed effects...

**If you increase your
FTEs by 1%, the number of sessions
will increase by .53%**

An Example ...



The Averages tell us that in 2009 Centers had

3.4 FTEs and 88 Sessions

The model says if you increased Center FTEs by 18% you would expect to have

4 FTEs and 96 Sessions

If you doubled Center FTEs you would expect to have

6.8 FTEs and 135 Sessions

FHWA LTAP/TTAP Clearinghouse Staff: Contact Info

FHWA LTAP/TTAP Clearinghouse
ARTBA-TDF
1219 28th Street NW
Washington, DC 20007
202.289.4434

- Alison Premo Black, Director
 - ablack@artba.org
- Lisa Kelley McCluskey, Project Manager
 - lmcccluskey@artba.org
- Sarah Crane, Assistant Project Manager
 - scrane@artba.org
- Susan Monahan, LTAP/TTAP Coordinator
 - smonahan@artba.org



THANK YOU

