

LTAP/TTAP Update

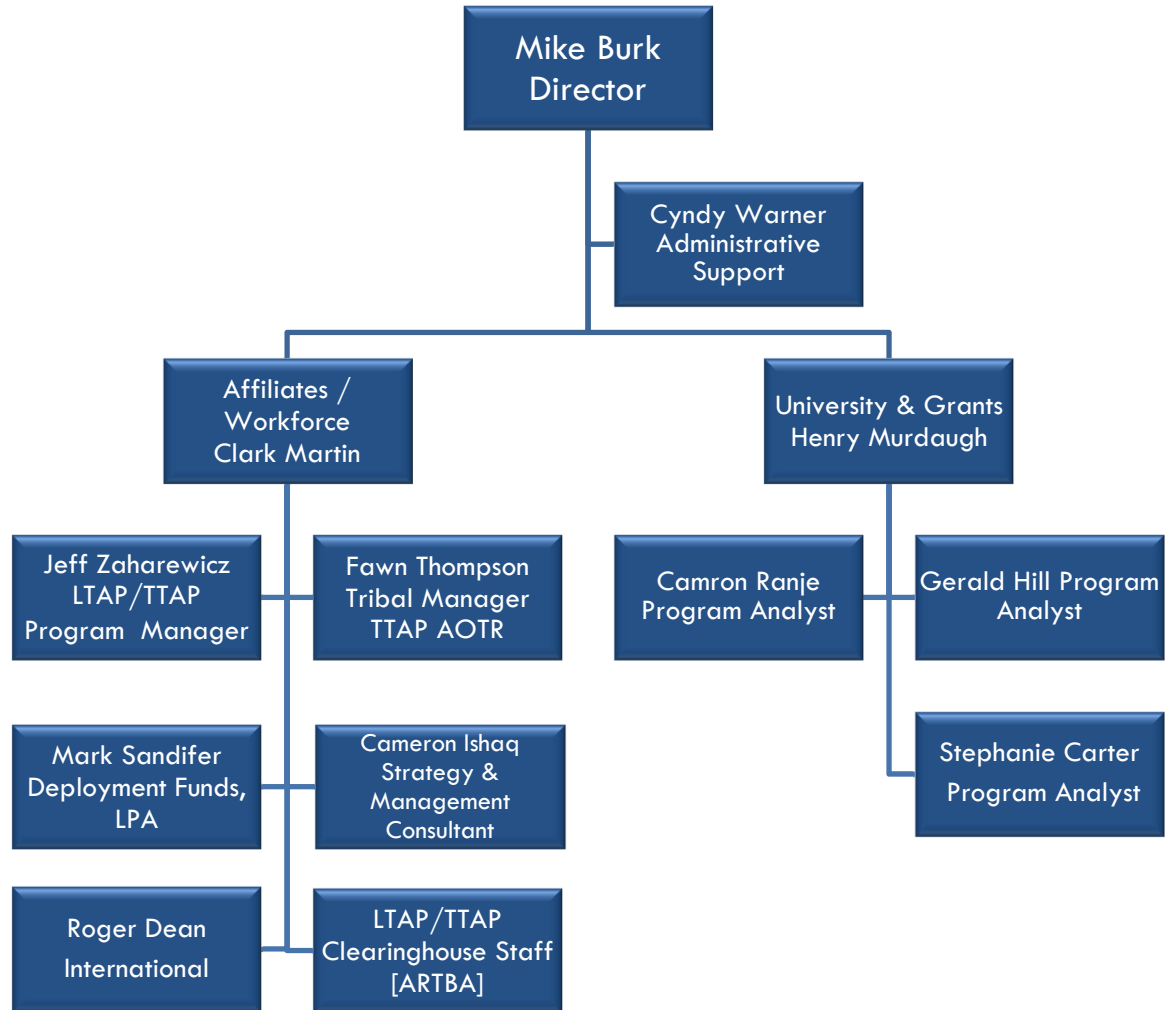
Technology Partnerships Programs

LTAP/TTAP Regional Meetings: Spring 2011

TPP Overview

- Update you on what's going on at Technology Partnership Programs
 - Roll out the LTAP/TTAP Strategic Focus on Safety
 - Provide status on current EDC and LPA efforts
- Recap the 2011 SPC Meeting in Seattle
 - Explain changes to the program performance reports
- Discuss status and next steps of the TTAP strategic initiative
- Invite your discussion, observations and feedback
 - Possible business plan items for 2011-12

TPP Organization



LTAP/TTAP Current Efforts

2011 Program Priorities

- Implement the strategic focus on safety on local and rural roads throughout LTAP/TTAP
- Follow through on the Every Day Counts summit meetings
- Track Center roles in the LPA effort across the country
- Strengthen our program focus on technology transfer
- Expand a culture of knowledge sharing among Centers
- Move the TTAP strategic initiative to next steps...improve coordination, collaboration and communication

Strategic Focus on Safety

- Local and rural road safety is a growing national priority
- NLTAPA Work Group connected LTAP/TTAP to wider road safety community
- TPP initiated effort to more fully integrate roadway safety into the program
 - Collaboration with NLTAPA to determine LTAP/TTAP safety role as well as tasks and efforts for Center implementation
- Three areas of effort:
 - Maintain, manage and grow external road safety partnerships
 - Create and maintain a tool kit of road safety resources for Centers
 - Implement road safety efforts and actions from a menu of options (LTAP/TTAP Centers)
- Goal – increase the level of road safety activity within LTAP/TTAP

Strategic Focus on Safety

What does this mean for LTAP/TTAP Centers?

- Adopt and incorporate the national strategic focus on safety
- Select activities from the national menu of safety initiatives – or offer additional activities – for action in 2011
- Integrate these efforts into Center work plans in the Safety focus area
- Assess the effectiveness of these efforts annually
- Add new safety work plan items each year as necessary

By engaging in roadway safety, Centers will create new opportunities to enhance their role as the “one-stop shop” for locals

Strategic Focus on Safety

Options from the national menu:

- Investigate available road safety training/materials in your state
- Offer a multidisciplinary safety training like Road Safety 365
- Access and understand state and local crash data
- Perform and/or participate in RSAs
- Include road safety messages in communications and marketing
- Hold road safety fairs/other events to educate officials, public
- Collaborate with your state DOT safety office on programs
- Share the HSM-Lite messages with your locals

The list is long but by no means exhaustive – Centers may select from the menu and / or add items that are not on the menu

State of the Program

Centers are addressing LPA issues with local agencies:

- Nebraska LTAP partnered with FHWA to develop a detailed LPA manual and delivers 62 hours of training to certify locals
- Approximately 50% of LTAPs are engaged in LPA

Involvement with EDC:

- LTAP community identified as a key partner in the development of State-based Implementation Plans
- Nearly every Center attended the EDC summits and have become positioned to help local and tribal agencies with these technologies
- EDC Summit logistics coordinated via LTAP resources

Emphasis on Infrastructure Management continues:

- Centers are delivering an Asset Management course for local agencies
- Movement to “de-pave” facilities

Knowledge Sharing

We've been successful to date:

- More Centers using Seminar Room...270 sessions held since rollout, will top 300 during 2011
- More resources now reflected in LTAP/TTAP Resource Database...closing in on 3,000 items
- More peer-to-peer, best practice sharing at regional meetings
- More interactive national Program website with more useful information and easier access for Centers, partners and customers

2011 Program Initiatives – TTAP

- TTAP Strategic Initiative – Tribal Centers looking to increase communication, coordination and collaboration among Centers and key partners (Federal Lands Highways, BIA)
- The TTAP community is actively looking to expand their interaction with LTAP Centers on topics of mutual interest
- Encourage LTAP and TTAP Centers to share resources and materials, information and training opportunities across the local programs

2011 Program Initiatives – TTAP

- 2011 SPC identified stronger relationships between LTAP and TTAP as a priority
 - Increase training opportunities and knowledge sharing
 - Build on the discussions led by Lisa Harris at the 2008 Region 2 Meeting in Tulsa
- Ad hoc group created to renew effort and address ways LTAP and TTAP Centers can better coordinate, collaborate and communicate
- Looking for your input and support:
 - What would you improve about your relationship with your TTAP?
 - What can LTAP do to foster a better relationship with TTAP?
 - How can your Center work with the TTAP to provide relevant services to tribes?
 - How can NLTAPA help, and how can it become more relevant to its TTAP members?

LTAP/TTAP
Strategic Outlook

FHWA Strategic Planning Committee

- Matt Enders – WA
- Lisa Harris – KS [Former NLTAPA President]
- James Martin – NC [Current NLTAPA President-Elect]
- *Richard Rolland* – *NW TTAP* [Term ends 2011]
- Donna Shea – CT
- Marie Walsh – LA [Former NLTAPA President]
- [Vacant]
- Cameron Ishaq – FHWA SPC Liaison
- Jeff Zaharewicz – FHWA LTAP/TTAP Program Manager

SPC Seattle 2011

- Discussed how LTAP/TTAP can change to reflect new environment and priorities
 - Making partnerships more collaborative
 - Performance-based data-driven management
 - Leadership on emerging issues e.g. Strategic Focus on Safety
 - Sharing more information and resources among Centers
- Potential impacts include moving towards more consistency across Centers, support for Centers that develop unique competencies for sharing
- Consider more support for national, regional peer exchanges

Changes to PAR/CAR for 2011-12

- New sections added to collect safety data to support the strategic focus:
 - Break out road safety courses, participants etc. into a separate table (road safety, worker safety, work zone safety)
 - Added check-boxes to collect Center efforts from the menu in the strategic focus document
- Removed best practices section, some short answer questions; tightened up others to obtain better data
- “Activities Related to Program Stakeholders” section will shift from counting events to indicating output – “check boxes vs. numbers”
- Asking new short answer questions in Sections I and II of the CAR

There will be a Seminar Room detailing all changes on July 20, 2011

LTAP/TTAP Performance Overview

National PAR Dataset Summary

	2005	2006	2007	2008	2009	2010
Sessions [average = 5,139]	5,127	4,978	5,374	4,986	5,132	5,238
Participants [average = 143,853]	132,906	136,808	149,430	154,501	140,715	148,760
Participant Hours [average = 890,178]	923,725	901,829	829,146	939,196	835,540	911,630
Newsletters [average = 407,137]	506,642	461,377	349,877	373,322	363,885	387,720
Total FTE [average = 197 or 3.39 per Center]	201	212	195	192	185	194

TTAP PAR Dataset Summary

	2006	2007	2008	2009	2010
Sessions [average = 307]	386	246	273	330	299
Participants [average = 8,849]	13,456	6,521	6,206	10,971	7,092
Participant Hours [average = 43,493]	79,428	31,291	30,022	38,594	38,128
Newsletters [average = 11,381]	5,624	18,308	16,142	8,464	8,369
Total FTE [average = 18.5 or 2.6 per Center]	21	13.6	17.5	27	13.51

National PAR Dataset Summary

Safety Remains the Primary Focus Nationally

	2005	2006	2007	2008	2009	2010
Safety Courses	3,364	2,364	2,497	2,383	2,460	3,160
<i>All Courses</i>	5,127	4,978	5,370	4,986	5,132	5,238
Safety Participants	96,328	57,355	63,604	60,835	59,097	62,431
<i>All Participants</i>	132,906	136,808	149,316	154,501	140,715	148,760

About 60% of all courses and
about 42% of all participants...

TTAP PAR Dataset Summary

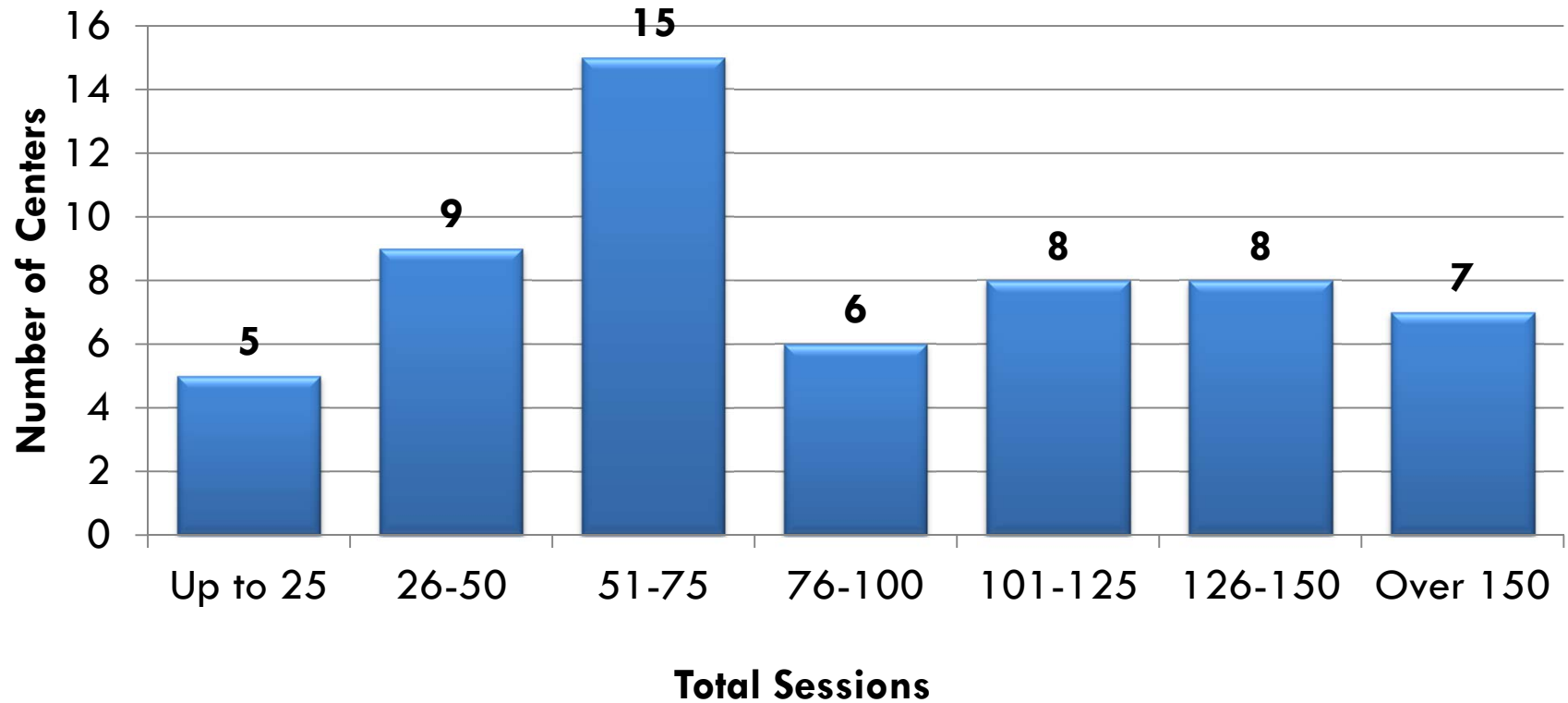
Infrastructure Management Remains the Primary Focus for TTAP Centers

	2006	2007	2008	2009	2010
Infrastructure Management Courses	229	156	131	173	135
<i>All Courses</i>	386	246	273	330	299
Infrastructure Management Participants	9,103	4,883	4,170	6,326	3,366
<i>All Participants</i>	13,456	6,521	6,206	10,971	7,092

About 45% of all courses and
about 47% of all participants...

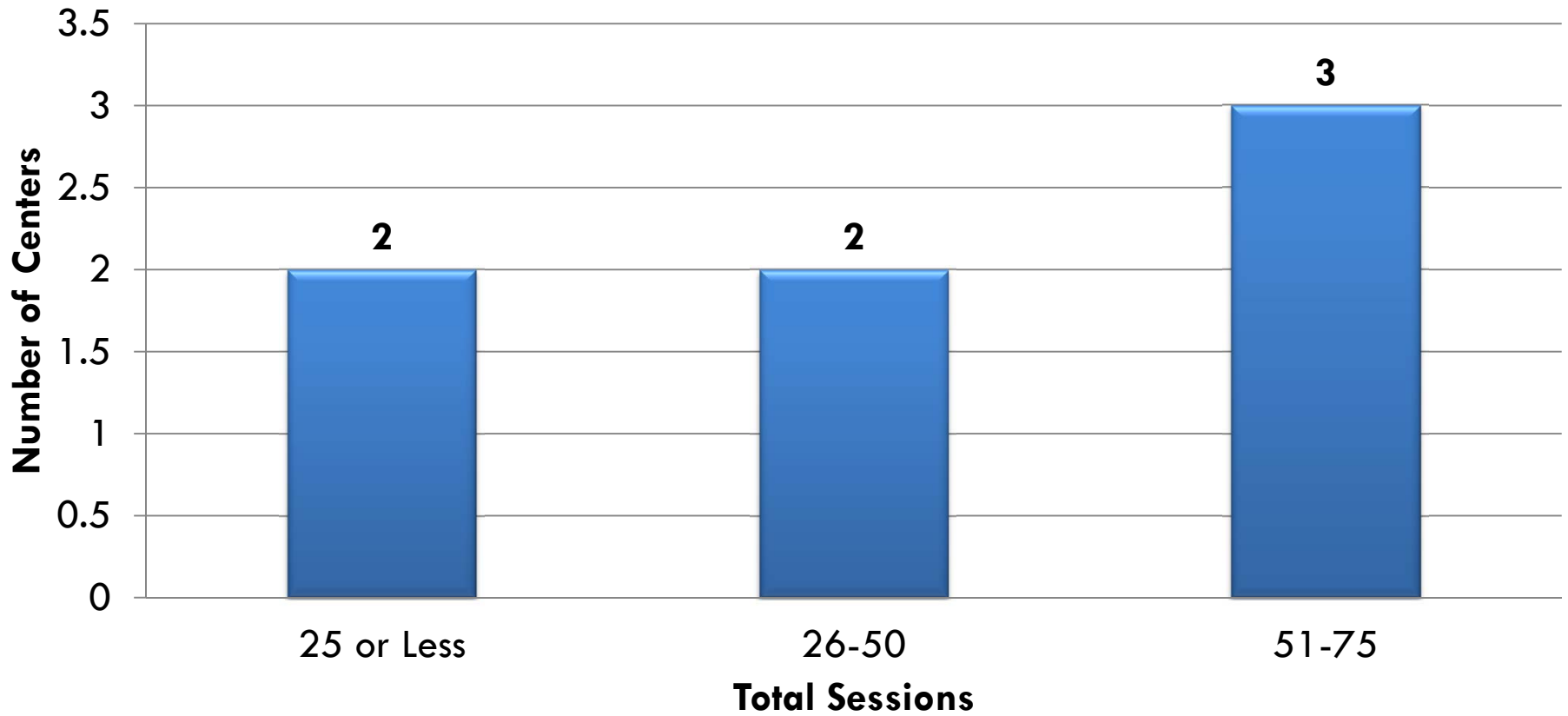
Most Centers Conduct 51-75 Sessions

Distribution of Sessions for 2010



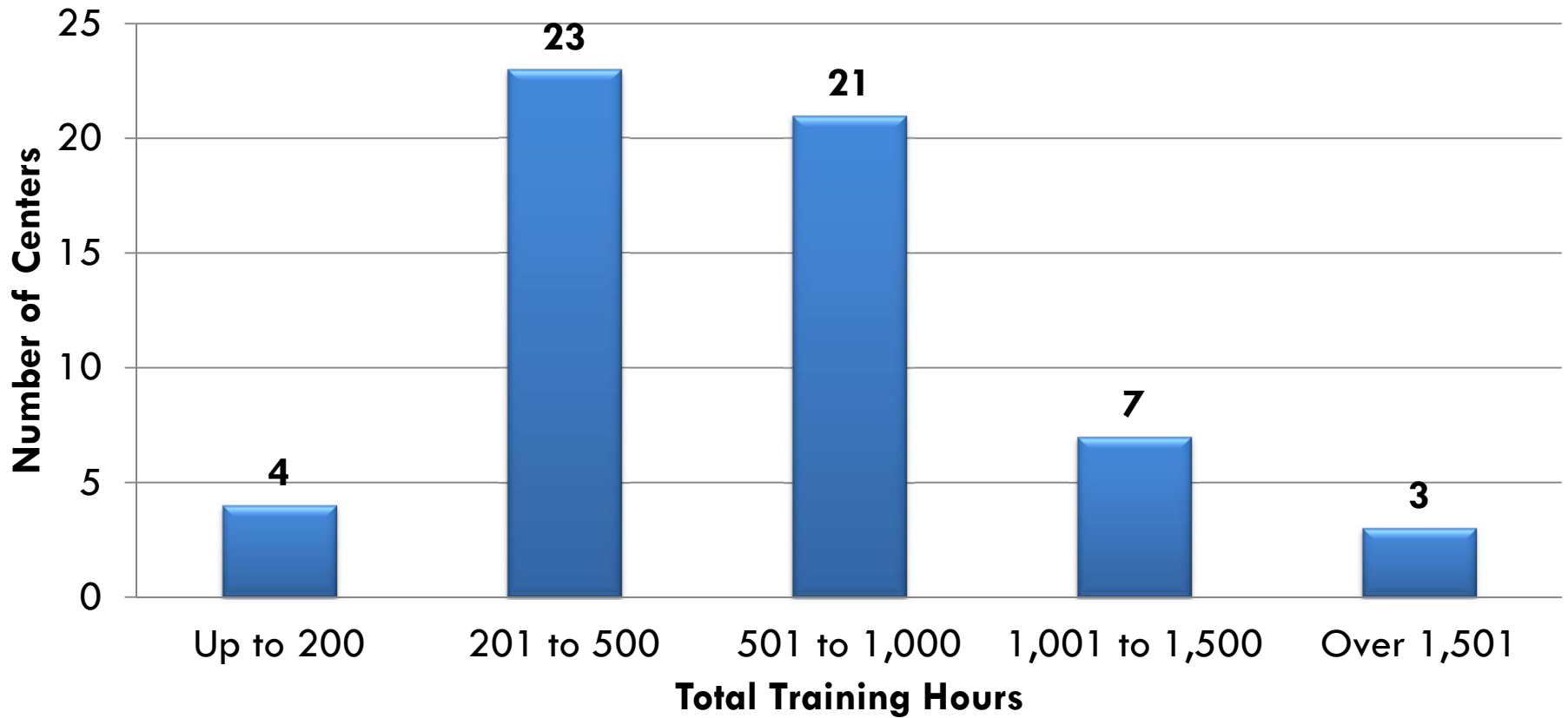
Most TTAPs Conduct 51-75 Sessions

TTAP Distribution of Sessions for 2010



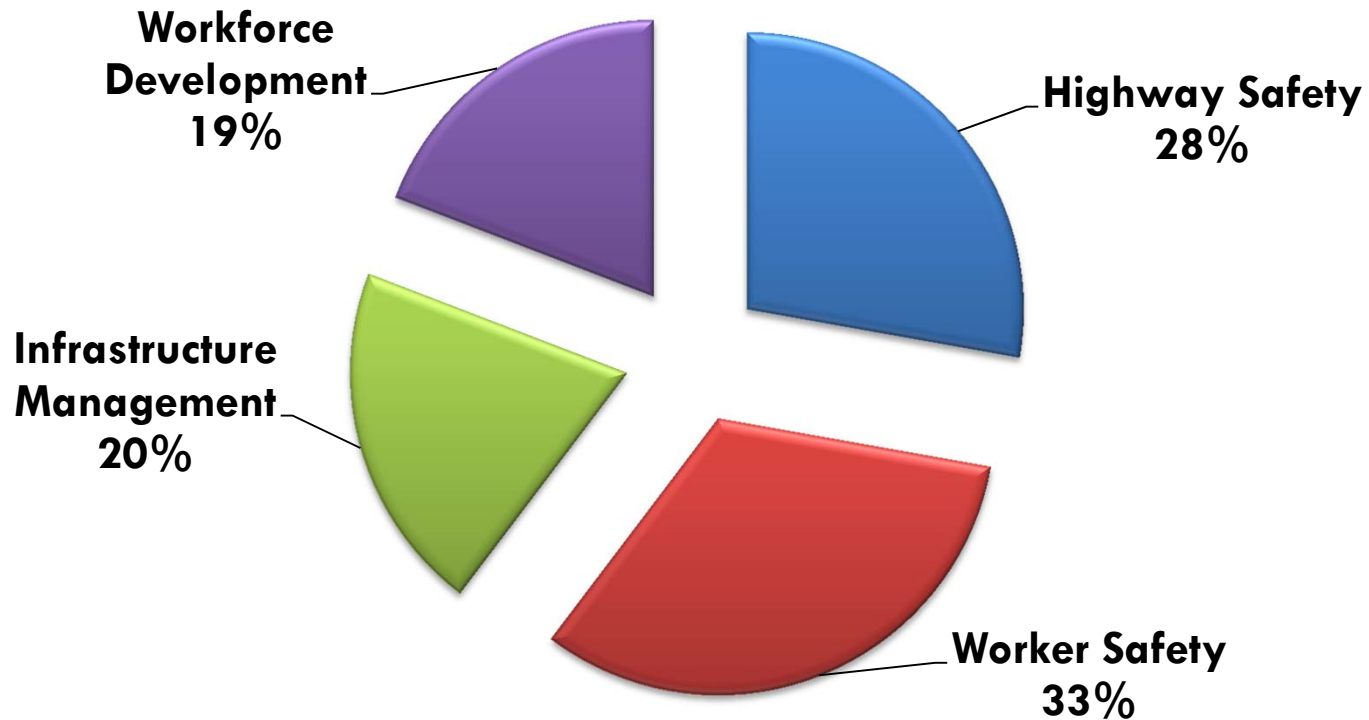
Most Centers Conduct 201-500 Hours of Training

Distribution of Training Hours for 2010



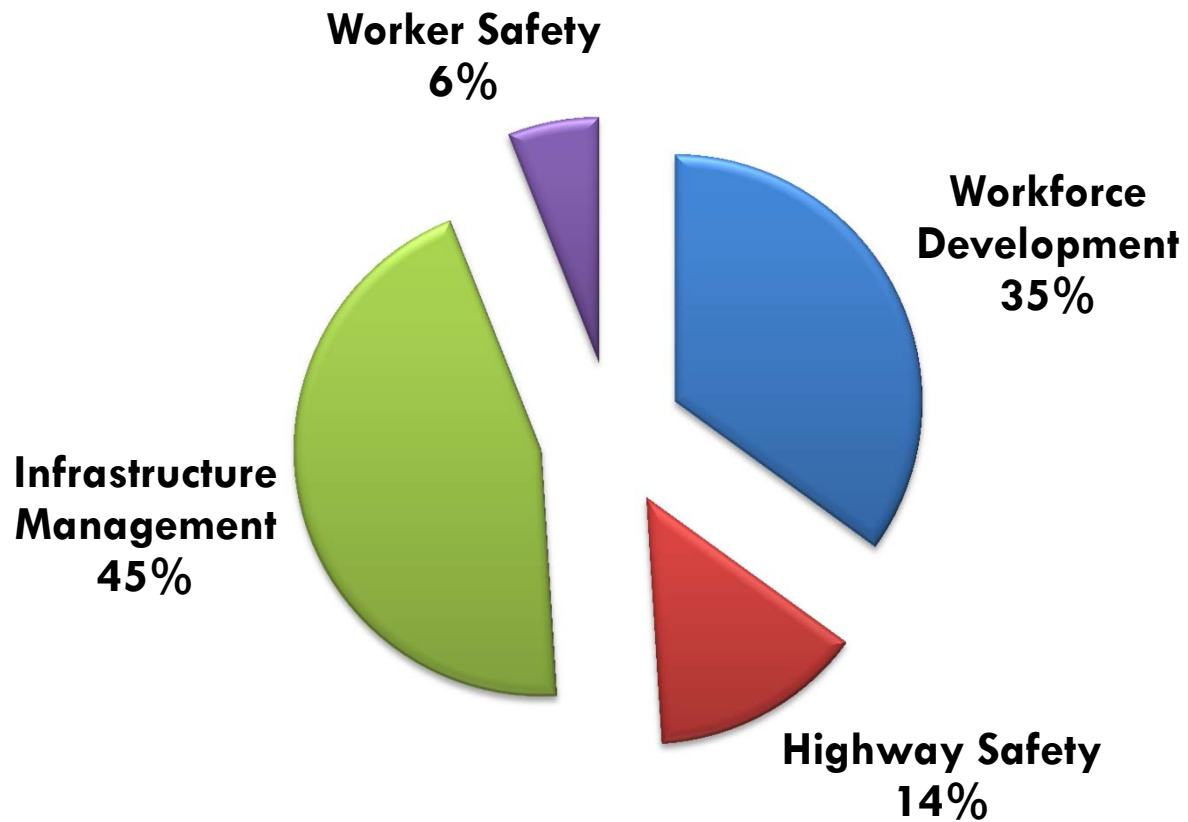
LTAP/TTAP Training Breakdown

Sessions by Focus Area for 2010



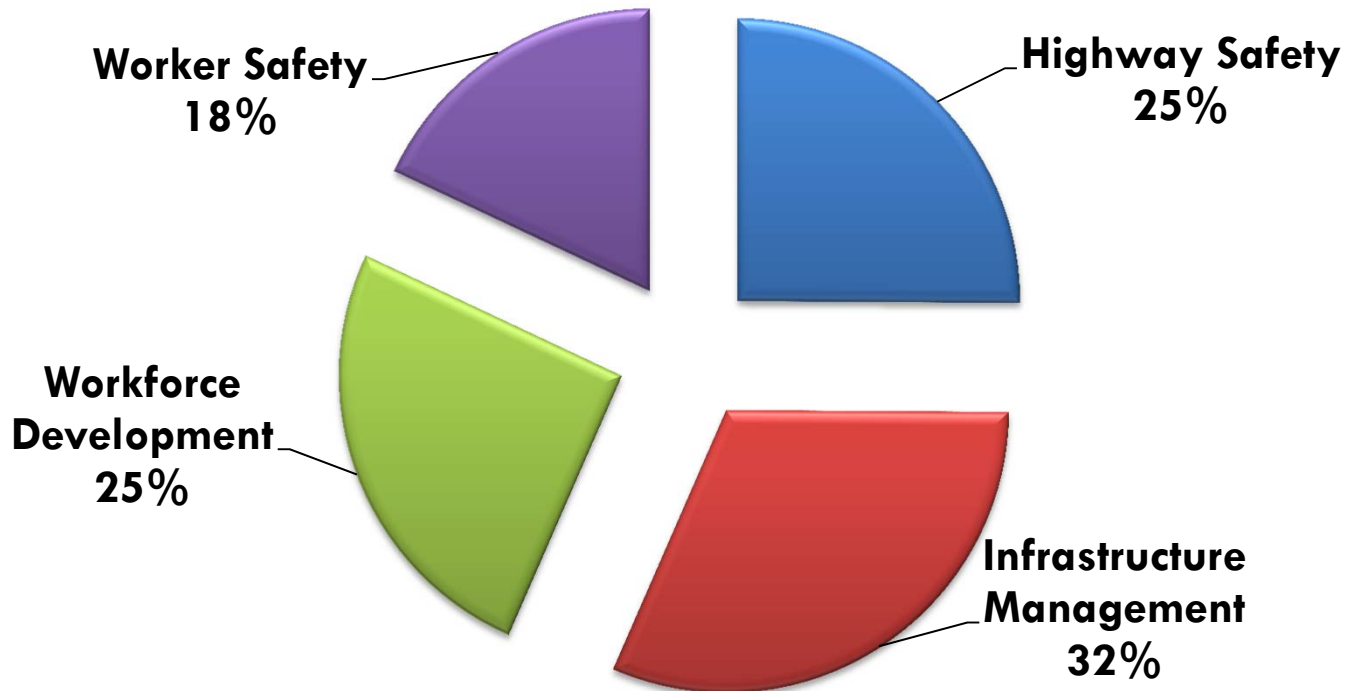
TTAP Training Breakdown

TTAP Sessions by Focus Area for 2010



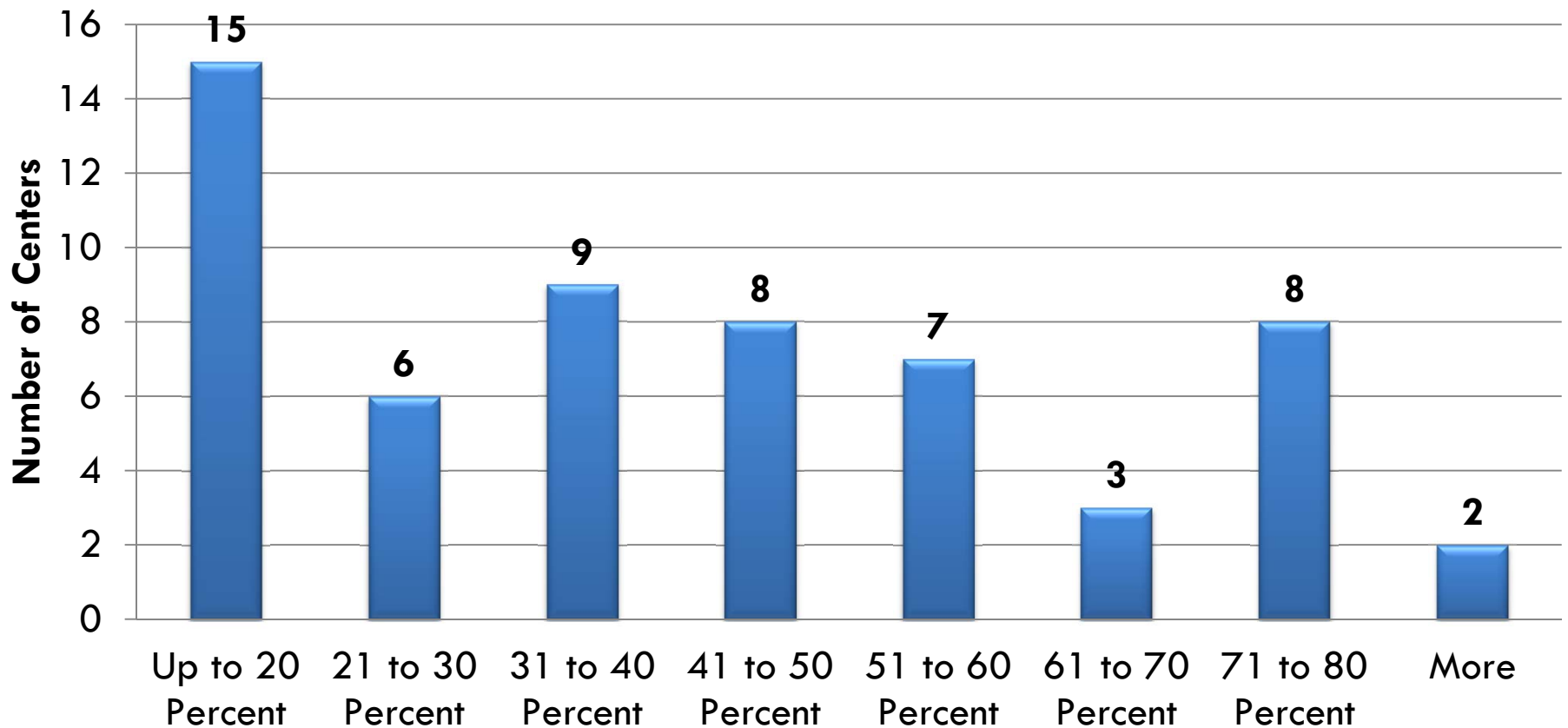
LTAP/TTAP Training Breakdown

Hours of Training by Focus Area for 2010

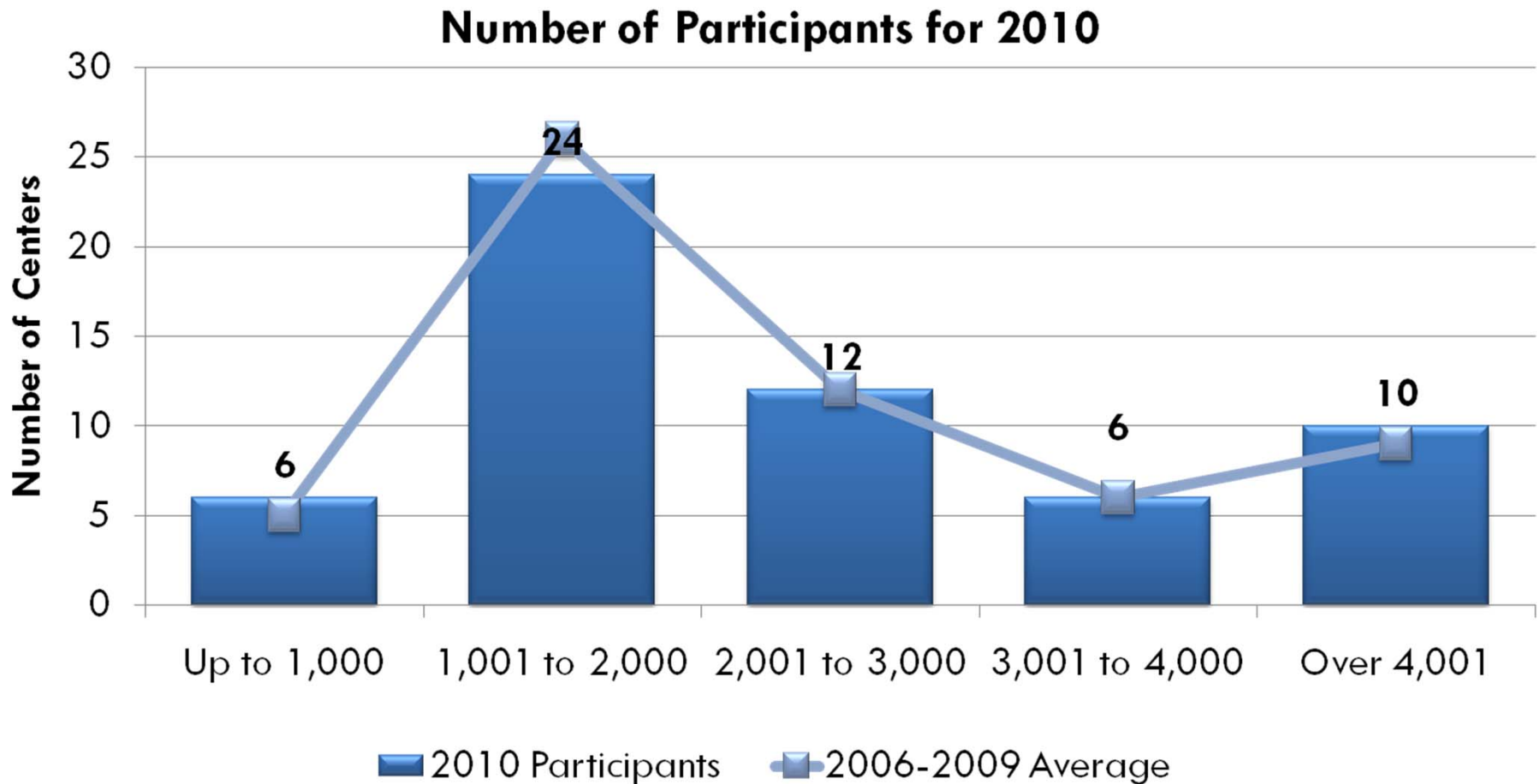


Center Safety Focus Varies

Percent of Total Sessions That Are Safety Related for 2010

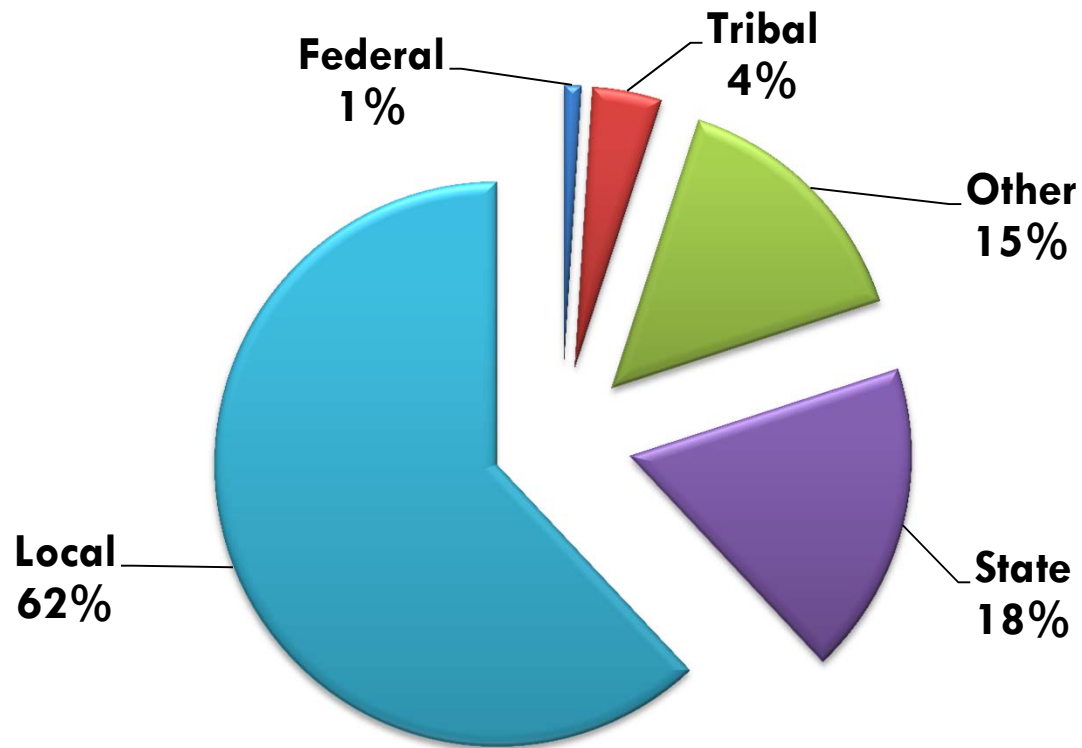


Most Centers Train Between 1000-2000 People



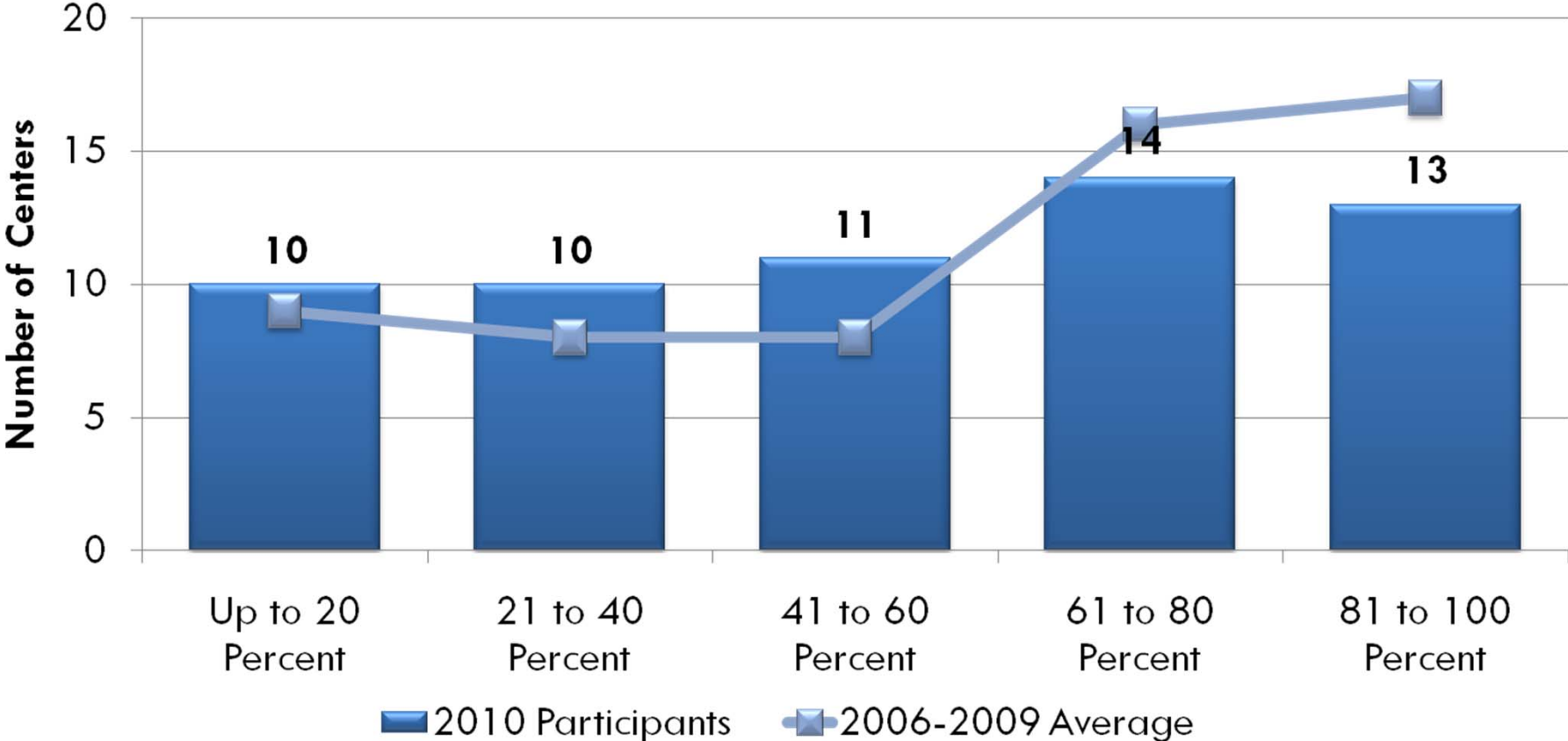
Most Participants are Locals...

Breakdown of Participants for 2010

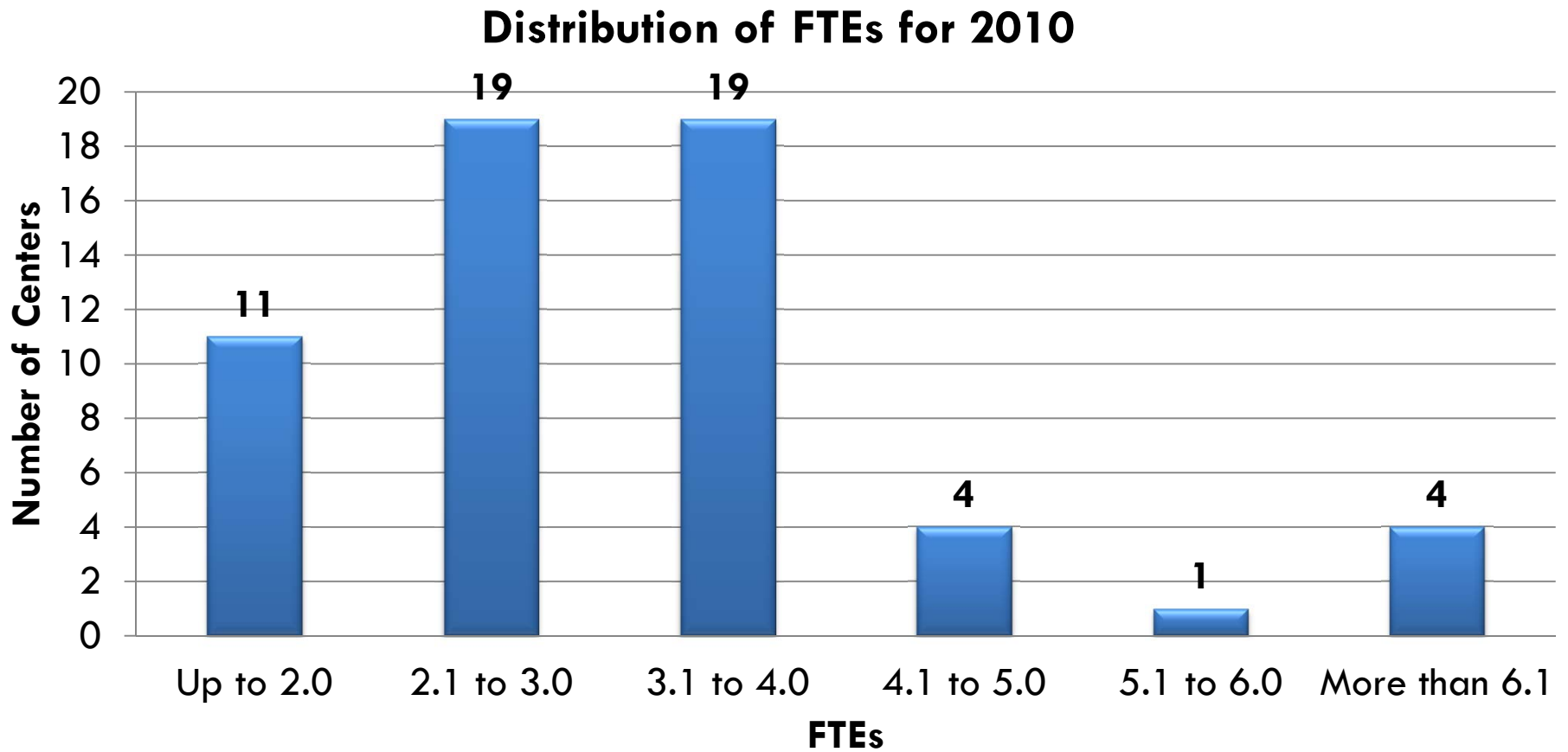


...Though the Rate Varies

Percent of Total Participants That Are Locals for 2010

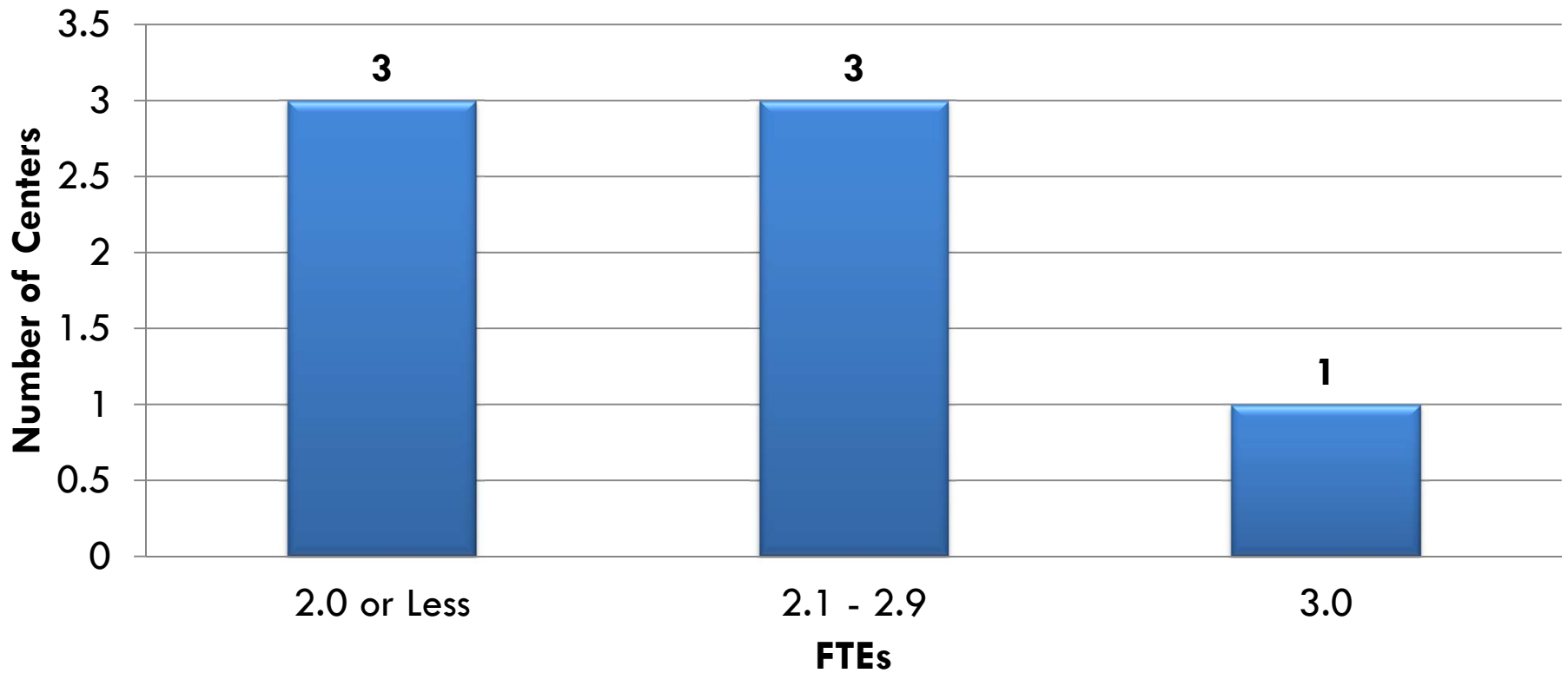


Most Centers Have 3-4 FTEs



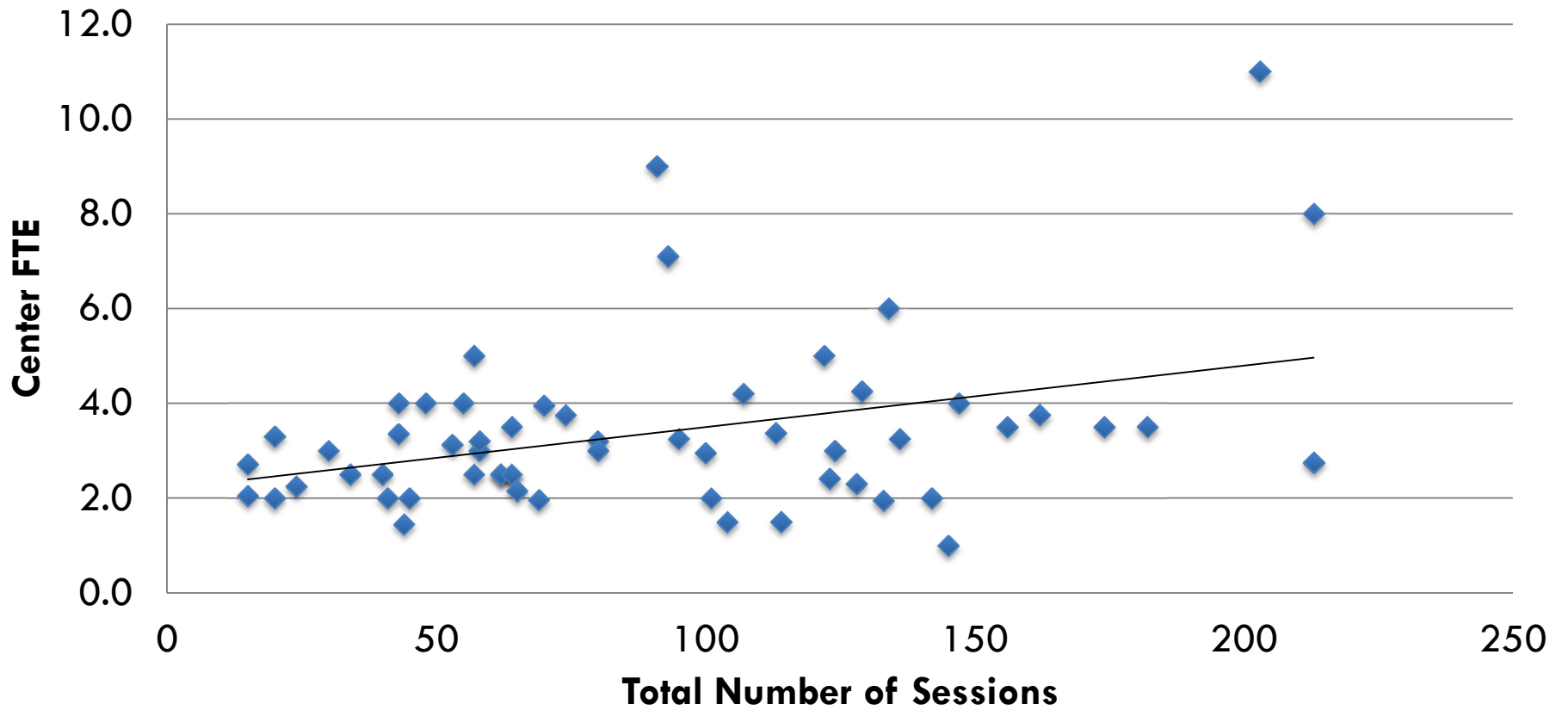
Most TTAP Centers Have 2–2.9 FTEs

TTAP Distribution of FTEs for 2010



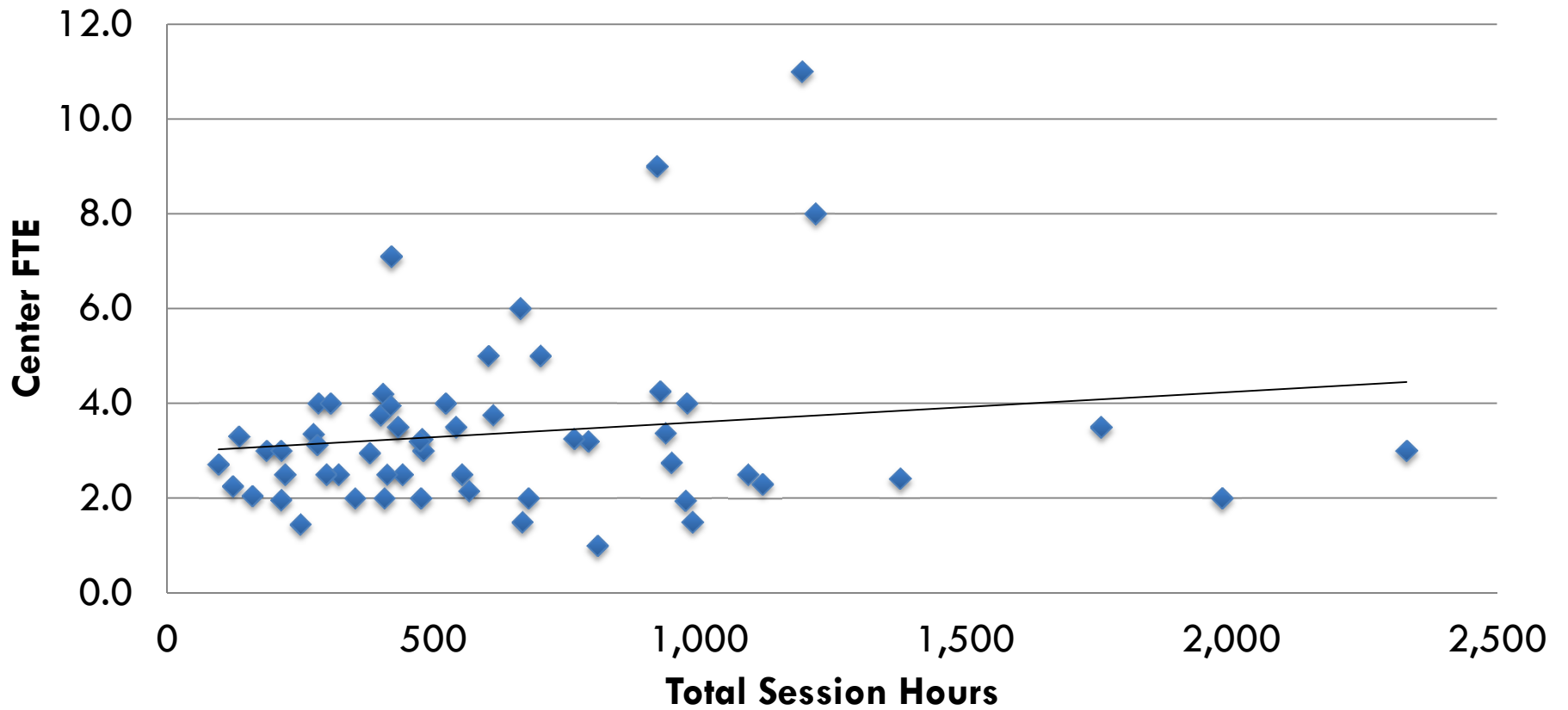
More FTEs Indicates More Sessions

Center Sessions and FTEs for 2010



...And More Hours of Training

Center Hours of Training and FTEs for 2010



FHWA LTAP/TTAP
Clearinghouse Outlook

FHWA LTAP/TTAP Clearinghouse Team

FHWA Clearinghouse Steering Committee

- Janet Leli – NJ LTAP [Current NLTAPA External Communications Chair]
- Dan Montagna – MA LTAP
- Mary McCarthy – CT LTAP
- Kelly Myers – CA/NV TTAP
- [Vacant]
- Cameron Ishaq – FHWA SPC Liaison
- Susan Monahan – FHWA Clearinghouse Coordinator

Preliminary Survey Results

- 25 Centers Responded
- 92% have an active lending library
- Only 29% have a staff librarian – 71% do not
 - Only 1 of the Centers had an FTE that was purely devoted to their lending library
 - 81% of Centers thought it would be beneficial to have access to a nationally maintained library

Looking Forward...

- Discussions with the CSC and Center librarians
- Community Survey
- Regional Meeting Listening Sessions
- Presentation at NLTAPA Conference in Boston

National Library – Center Feedback

- What does it look like?
 - Purely online
 - Hybrid online/lending
- What are its functions?
- Who does it serve?
 - Centers
 - Center Clients
- What types of materials should it have?
 - Videos/DVDs
 - Manuals

Questions, Comments, Feedback...

Mike Burk PE
Director, TPP
(703) 235-0530
mike.burk@dot.gov

Cameron Ishaq
Strategy & Management Consultant
(703) 235-0525
cameron.ishaq@dot.gov

Jeff Zaharewicz
LTAP/TTAP Program Manager
(703) 235-0991
jeffrey.zaharewicz@dot.gov

Alison Premo Black
LTAP/TTAP Clearinghouse Director
(202) 289 4434 x.205
ablack@artba.org

Thank You LTAP/TTAP Regions!