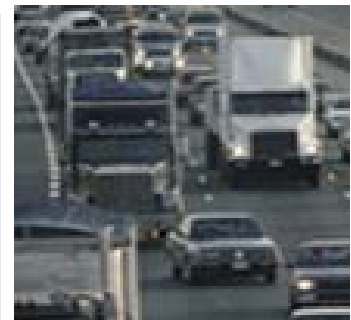


# LTAP Asset Management Training Program

Katie Zimmerman, P.E.  
Applied Pavement Technology, Inc.  
kzimmerman@appliedpavement.com



applied pavement  
TECHNOLOGY

# Today's Goals



1. Provide a status report on the development of training through NHI



2. Prioritize learning objectives for the course



# NHI TAM for Locals Update

- Proposal for development submitted to NHI
- Contract award expected in the next several weeks



# Proposed Approach

- Kick-Off Meeting to Define Course Requirements
  - 1-day, 1 ½-day, 2 day outlines
- Preliminary Lesson Plans
  - Walk-Through via Webconference
- Develop Curriculum Material
  - Technical Review Meetings
- Train-the-Trainer/Pilot Session



# Proposed Project Schedule





# Challenge

- How long should the course be?
- What should the course cover?
- How much flexibility needs to be built into the course for regional/local examples?

# How Long Should The Class Be?



- 1 day: 6 hours of instruction
- 1 ½ days: 9 hours of instruction
- 2 days: 12 hours of instruction
- 2 separate 1-day sessions





# What Should Be Covered?

- What do you expect the participants to be able to do at the end of the course?
  - Remember information?
    - Define, identify, label, state, list, match
  - Comprehend or explain meaning?
    - Describe, summarize, estimate
  - Apply concepts?
    - Determine, implement, prepare, solve, use, develop



# Workshop

- In small groups, identify learning outcomes for the course
- Select the top 5 learning outcomes for your group
- Report the top 5 to the entire group